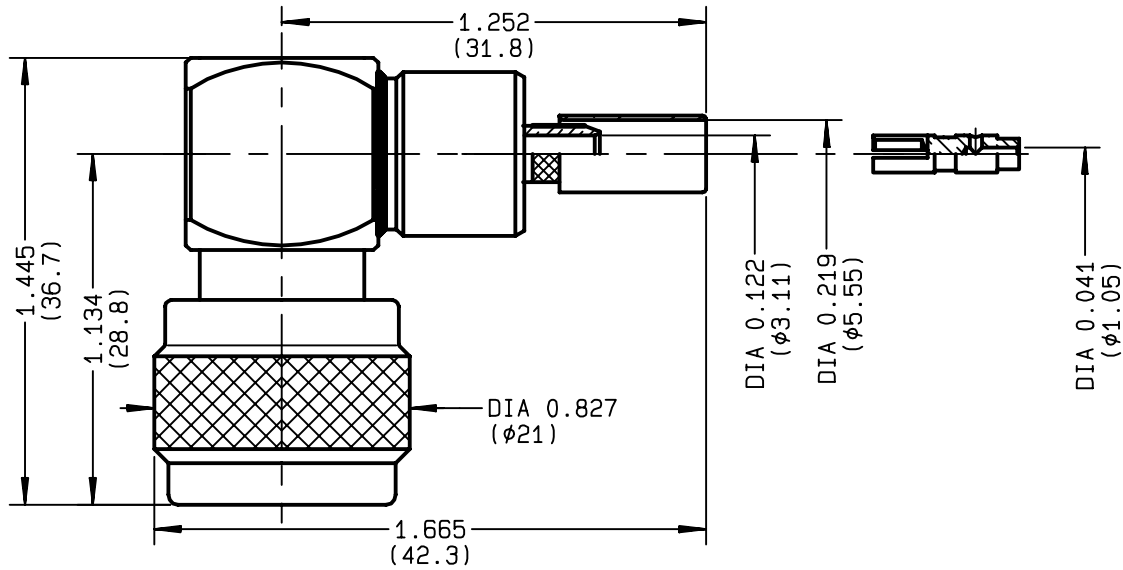


**RIGHT ANGLE PLUG CRIMP-TYPE
CABLE 5/50 S**

R161.182.400
SERIES N



NOMINAL IMPEDANCE	50 Ω	CABLES : BSSM 742
FREQUENCY RANGE	0-11 GHz	KX 15
TEMPERATURE RATING	-55/+155 °C	RG 141
V.S.W.R	1.5 + x F(GHz)Maxi	RG 58
RF INSERTION LOSS	0.07 √F(GHz) dB Maxi	
VOLTAGE RATING	850 Veff Maxi	
DIELECTRIC WITHSTANDING VOLTAGE	1500 Veff Mini	
INSULATION RESISTANCE	5000 MΩMini	OTHERS CHARACTERISTICS
HERMETIC SEAL	NA Atm.cm ³ /s	CABLE RETENTION 150 N Mini
LEAKAGE (pressurized only)	NA	CENTER CONTACT RETENTION
MECHANICAL DURABILITY	500 Cycles	Axial force - mating end 27 N Mini
WEIGHT	gr	Axial force - opposite end 27 N Mini
SPECIFICATION		Torque NA cm.N Mini
		RECOMMENDED TORQUES
		Mating 130 cm.N
		Panel nut NA cm.N
		Clamp nut NA cm.N

CONNECTOR PARTS	MATERIALS	FINISH	(all values are given in micrometers)
BODY	BRASS	BBR 2	
OUTER CONTACT	BRASS	BBR 2	
CENTER CONTACT	BRASS	GOLD 0.5 OVER NICKEL 2	
INSULATOR	PTFE	-	
GASKET	SILICONE RUBBER	-	
OTHERS PIECES	BRASS	BBR 2	

ISSUE	CREATION DATE	FILE PART-NUMBER
9835C00	11/06/1991	91-0400-269



D. PIONCHON

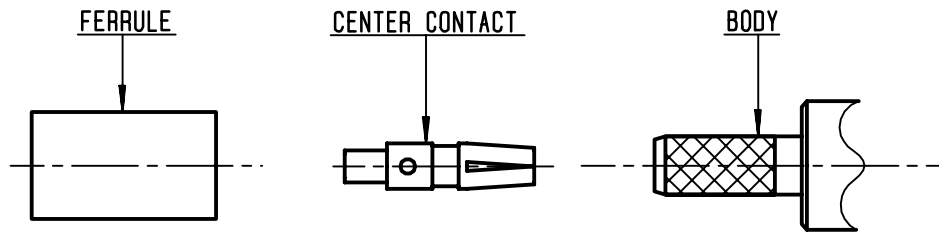
The information given here is subject to change without notice.
Design changes may be in order to improve the product .

Connect to the future



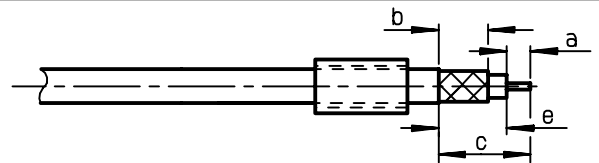
R161.182.400

ISSUE **9835C00** SERIES **N**



①

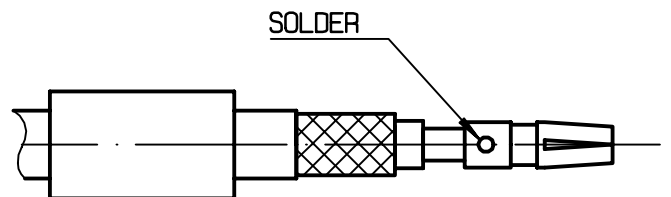
Slide the ferrule onto the cable .
Strip the cable .
-
-
-



Stripping	a	b	c	d	e
inch	0.15	0.276	0.543	0	0.394
mm	3.8	7	13.8		10

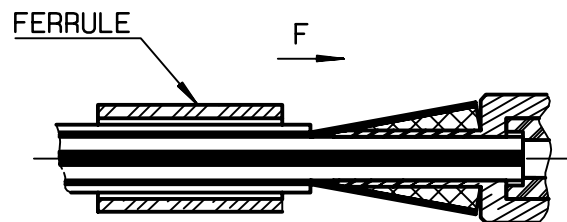
②

Slide center contact on until it bottoms against cable dielectric .
Solder center contact .
Clean soldered area .
-
-



③

Fan the braid . Remove tape if necessary .
Slide cable into body until contact snaps in place .
Slide ferrule over the braid .
(In direction F)



④

Crimp the ferrule with crimping tool R282 223 000 (hex: .213) or crimping tool R282 293 000 (M22520/5-01) + dies R282 235 011 (M22520/5-11)
Cut the excess of braid .
-

